



ANATOL

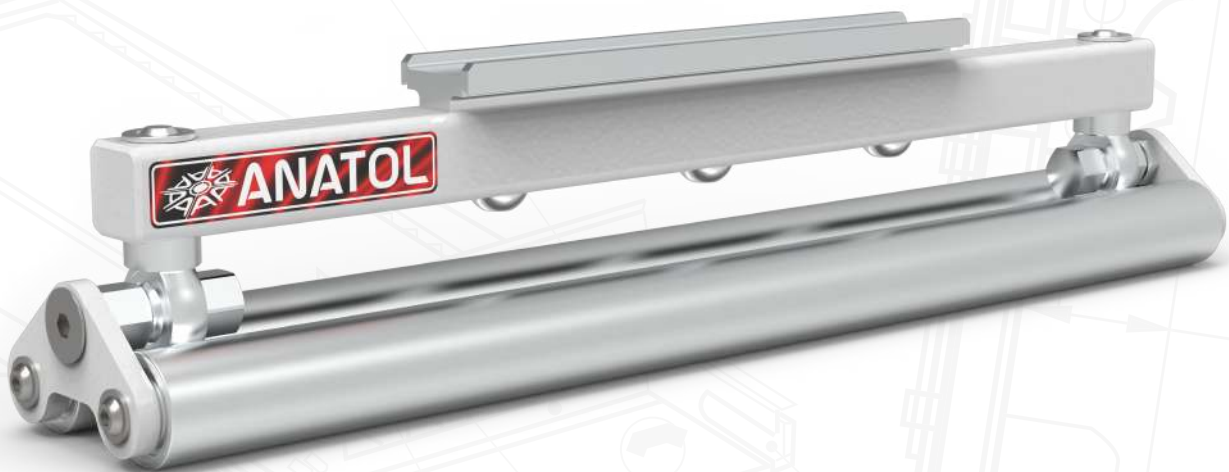
www.anatol.com

DOUBLE ROLLER SQUEEGEE

Prevent fibrillation and increase print quality

**Quickly and easily mounts in the print carriage of an
Anatol VOLT, Vector or Titan automatic press**

- Tool-less installation and adjustments
- Mat down garment fibers after flash curing to eliminate fibrillation and boost opacity, capture fine details and create smoother, more comfortable prints
- Two models available: 16" wide and 20" wide
- Includes PTFE sheet, compatible with screen frames from 21"x28" up to 26"x43"





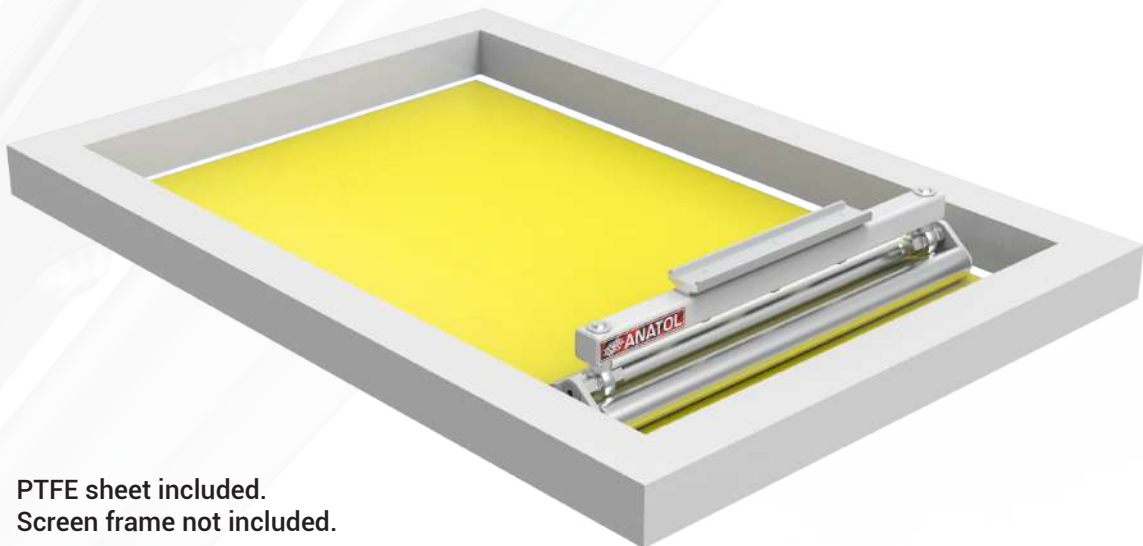
SPECIFICATIONS

Roller 16" S-M

| OVERALL ROLLER DIMENSIONS | | COMPATIBLE FRAME SIZES | |
|---------------------------|-----------------|------------------------|-----------------------------|
| Length | 17.4" (44.3 cm) | Length | 28" (71.1cm)-33" (83.8 cm) |
| Width | 3" (7.7 cm) | Width | 21" (53.4 cm)-23" (58.4 cm) |
| Height | 3.66" (9.3 cm) | Height | 1.6"(4.0 cm) |

Roller 20" L-XL

| OVERALL ROLLER DIMENSIONS | | COMPATIBLE FRAME SIZES | |
|---------------------------|----------------|------------------------|-----------------------------|
| Length | 21.2" (54.0cm) | Length | 26" (66.0cm) |
| Width | 3" (7.7cm) | Width | 36" (91.4cm)-43" (109.2 cm) |
| Height | 3.66" (9.3 cm) | Height | 2" (5.0 cm) |



Two-Year Limited Warranty

Every effort has been made to ensure the accuracy of the promotional information included in this brochure. Specifications are subject to change. Anatol Equipment Manufacturing Co. and its subsidiaries, if any, expressly disclaim any liability for damages, consequential or incidental, resulting from the purchase, transportation, installation, or use of any products based on information contained within this brochure. Any rights or remedies are limited solely to those provided in writing by Anatol Equipment Manufacturing Co. at the time of sale.