



www.anatol.com

Flash Cure Units

Quartz Flashes for Manual and Automatic Presses

Versatile Curing Solutions

- Quartz flashes with sensors allow you to set and maintain a desired curing temperature
- Control your flash right from the touchscreen of your Anatol automatic press
- Long-lasting quartz bulbs ensure consistent heating

Maximum Control and Reliability

- Flash cure units available with floor stands for uses with manual presses
- Easily mount flash cures on your Anatol automatic press the same way you load a screen
- Models available with curing areas up to 30» x 40»



COMET LIGHT

 **The speed and efficiency of quartz flash curing in our most affordable package**

- Set your desired flash time with the easy-to-use digital controller
- Pallet sensor detects when a shirt is under the flash for automatic activation/deactivation - so the lamps are only on when you need them, reducing energy compared to infrared flashes which are always on
- Quartz lamps heat up and cool down quickly



TIMER BOX

- Multiple curing zones - two or three zones depending on the size of the flash (see table below)
- An electric box is an option for Flash control on manual machines

COMET LIGHT SIZE	NUMBER OF LAMPS	NUMBER OF CURING ZONES	ELECTRICAL REQUIREMENTS *
16"x 18" 46.0x96.9cm (52.3x96.9cm)	9 Lamp	2 zone (I -6 lamp, II - 3 lamp)	1 Ph, 208-240V, 50/60 Hz, 9kW, 43A 3 phase 208V 25 A
20"x 24" 58.0x110.4cm (64.3x110.4cm)	10 Lamp	2 zone (I -6 lamp, II - 4 lamp)	1 Ph, 208-240V, 50/60 Hz, 12,5kW, 60A 3 phase 208V 35 A
20"x 28" 58.0x120.0cm (64.3x120.0cm)	15 Lamp	3 zone (I -5 lamp, II - 5lamp, III - 5 lamp)	1 Ph, 208-240V, 50/60 Hz, 18,75kW, 90A 3 phase 208V 52 A

*The maximum power consumption is calculated for all lamps operating at maximum power

*The dimensions in parentheses mean the dimensions with the electrical box

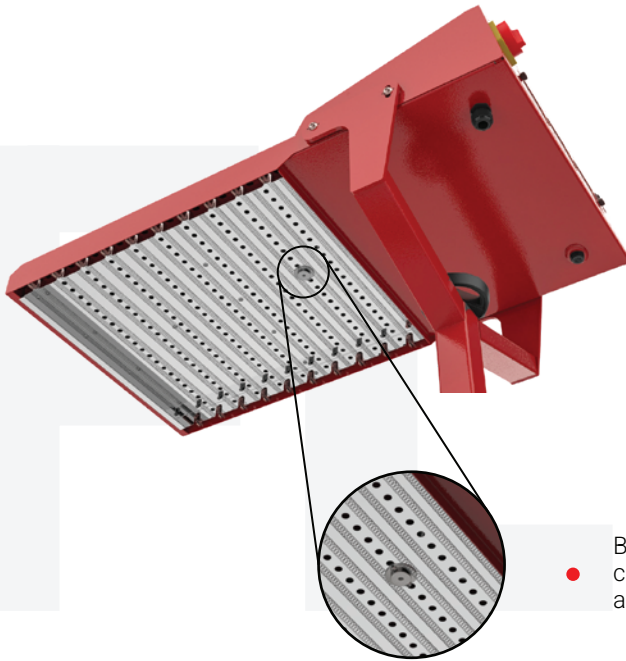


STANDARD FEATURES

COMET SMART

Fast flash curing saves energy and keeps production high

- Quartz lamps heat up and shut down quickly, saving electricity
- Three curing zones can be controlled independently or in combination
- Horizontally arranged bulbs allow for more bulbs than competing flashes, ensuring thorough curing and precise control over intensity
- An electric box is an option for Flash control on manual machines



- Built-in temperature sensor allows you to set a precise curing temperature from the touchscreen of your Anatol automatic press

COMET SMART SIZE	NUMBER OF LAMPS	NUMBER OF CURING ZONES	ELECTRICAL REQUIREMENTS *
16" x 18" 46.0x96.9cm (52.3x96.9cm)	9 Lamp	2 zone (I - 6 lamp, II - 3 lamp)	1 Ph, 208-240V, 50/60 Hz, 9kW, 43A 3 phase 208V 25 A
20" x 24" 58.0x110.4cm (64.3x110.4cm)	10 Lamp	2 zone (I - 6 lamp, II - 4 lamp)	1 Ph, 208-240V, 50/60 Hz, 12,5kW, 60A 3 phase 208V 35 A
20" x 28" 58.0x120.0cm (64.3x120.0cm)	15 Lamp	3 zone (I - 5 lamp, II - 5lamp, III - 5 lamp)	1 Ph, 208-240V, 50/60 Hz, 18,75kW, 90A 3 phase 208V 52 A

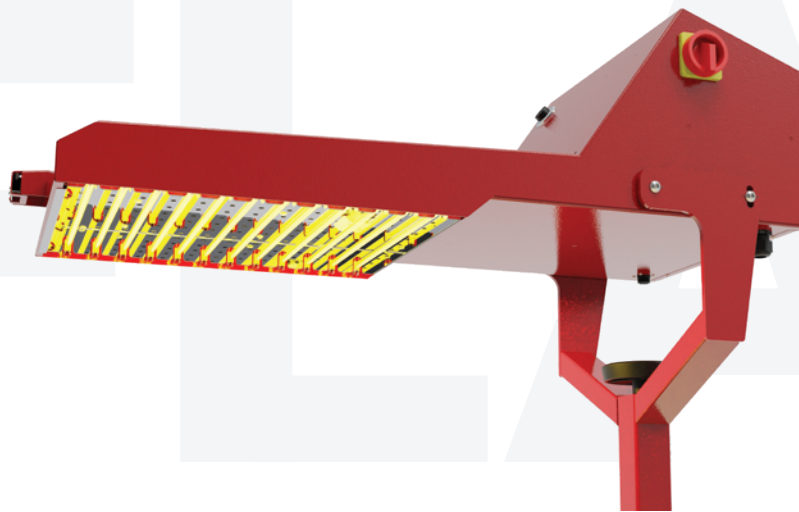
*The maximum power consumption is calculated for all lamps operating at maximum power

*The dimensions in parentheses mean the dimensions with the electrical box

COMET PRIME

 **Quartz flash with air circulation and temperature sensor, designed for curing delicate, heat-sensitive garments like nylon.**

- Three curing zones can be controlled independently or in combination.
- The possibility of connecting a foot switch.
- Suitable for all types of presses.
- Uniform air circulation cures many types of ink quickly and efficiently and prevent garments from scorching.
- Precise control over your curing intensity, temperature, air circulation and active heating zones, right from the control panel of your Anatol automatic press or the onboard touchscreen.
- Models available with 16"x18", 20"x28" curing areas



COMET PRIME SIZE	NUMBER OF LAMPS	NUMBER OF CURING ZONES	ELECTRICAL REQUIREMENTS	
16"x 18" 46.0x96.9cm (52.3x96.9cm)	9 Lamp	3 zone	1Ph, 208-240V, 50/60 Hz, 54A	3Ph, 208V, 32A
20"x 24" 58.0x110.4cm (64.3x110.4cm)	18 Lamp	3 zone	1Ph, 208-240V, 50/60 Hz, 100A	3Ph, 208V, 58A

*The maximum power consumption is calculated for all lamps operating at maximum power

*The dimensions in parentheses mean the dimensions with the electrical box



STANDARD FEATURES

RAPID WAVE



The Rapid Wave Quartz Flash Unit is one of the fastest flashes available in the industry. The unit employs medium wave quartz, sealed halogen heating tubes that heat up almost instantly.

- Total power consumption is calculated For all Quartz lamps working at maximum power.
- Quartz lamps heat up and shut down quickly, saving electricity
- Three curing zones can be controlled independently or in combination
- Built-in temperature sensor allows you to set a precise curing temperature from the touchscreen of your Anatol automatic press
- Horizontally-arranged bulbs allow for more bulbs than competing flashes, ensuring thorough curing and precise control over intensity



MODEL	SIZE	SINGLE PHASE ELECTRICAL REQUIREMENTS	THREE PHASE ELECTRICAL REQUIREMENTS*
RWQF-1616	16" x 16" 41cm x 41 cm	43 AMPS	25 AMPS
RWQF-1618	16" x 18" 41cm x 46 cm	57 AMPS	33 AMPS
RWQF-2021	20" x 21" 51cm x 54 cm	85 AMPS	49 AMPS
RWQF-2028	20" x 28" 51cm x 71 cm	N / A	63 AMPS
RWQF-3040	30" x 40" 71cm x 102 cm	N / A	98 AMPS

*The maximum power consumption is calculated for all lamps operating at maximum power

*The dimensions in parentheses mean the dimensions with the electrical box

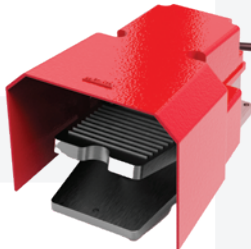


STANDARD FEATURES

COMET PRO

High concentration of IR energy in a small curing area

- Fast heat-up time (70% power is reached after 0.5 seconds)
- Lamps switch on and off as needed automatically during operation
- Integrates with touchscreen interface on Anatol Automatic Presses



FOOT PEDAL

- Variable lamp intensity controls to fine-tune heat setting
- Low energy consumption
- Cures ink quickly due to deep penetration of short waves of infrared radiation

COMET PRIME SIZE	NUMBER OF LAMPS	NUMBER OF CURING ZONES	ELECTRICAL REQUIREMENTS *	
16"x 18"	9 Lamp	2 zone	1Ph, 208-240V, 50Hz, 43A	3Ph, 3x400V+N, 25A
20"x 24"	10 Lamp	2 zone	1Ph, 208-240V, 50Hz, 43A	3Ph, 3x400V+N, 25A
20"x 28"	15 Lamp	3 zone	1Ph, 208-240V, 50Hz, 43A	3Ph, 3x400V+N, 25A

*The maximum power consumption is calculated for all lamps operating at maximum power

*The dimensions in parentheses mean the dimensions with the electrical box



STANDARD FEATURES

PILOT FLASH

 **Cure your largest prints with high speed and energy efficiency**

- Travels back and forth over the printed image so you can cure oversized prints with a compact flash cure unit
- Quartz lamps provide a high concentration and even distribution of energy for fast, thorough curing
- Compact, mobile design saves energy compared to a traditional stationary flash
- Available with 16", 20", 30" and 40" wide curing areas, so you can cure even jumbo prints quickly and efficiently



MODEL	WIDTH	NUMBER OF LAMPS	ELECTRICAL REQUIREMENTS *
PILOT-16	16" (41 cm)	4 Lamp	1 Ph, 208-240V, 50/60 Hz, 4kW, 19A 3 Ph, 208-240V, 50/60 Hz, 4kW, 11A
PILOT-20	20" (51 cm)	6 Lamp	1 Ph, 208-240V, 50/60 Hz, 6kW, 29A 3 Ph, 208-240V, 50/60 Hz, 6kW, 17A
PILOT-30	30" (71 cm)	12 Lamp	1 Ph, 208-240V, 50/60 Hz, 12kW, 58A 3 Ph, 208-240V, 50/60 Hz, 12kW, 33A
PILOT-40	40" (102 cm)	12 Lamp	1 Ph, 208-240V, 50/60 Hz, 15kW, 72A 3 Ph, 208-240V, 50/60 Hz, 15kW, 42A

*The maximum power consumption is calculated for all lamps operating at maximum power

*The dimensions in parentheses mean the dimensions with the electrical box