



ANATOL

www.anatol.com

Quick Light Pro

UV LED EXPOSURE UNIT





STANDARD FEATURES

QUICK LIGHT PRO

Compatible with the Anatol ARME pre-registration system (not included - must be ordered separately)

Convenient Combinations

- Pair the Quick Light PRO exposure unit with a screen rack or drying cabinet for maximum convenience
- Screen rack and screen drying cabinet feature heavy-duty casters for mobility
- Keep your screen preparation area neat and organized



Design and Construction

- 1/4" (6.4mm) thick optically clear plate glass
- Controlled ventilation within the light cabinet provides filtered ambient air
- Fully-enclosed, heavy duty steel cabinet built for durability, longevity and operational comfort
- Gas springs for easy opening and closing of the frame with blanket
- Removable covers provide easy access to internal components for cleaning and replacement

Blanket and Vacuum

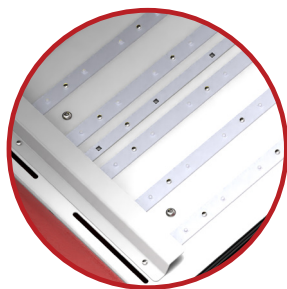
- Blanket made of flexible material to provide optimal vacuum seal around screen frame, film positive and glass for high resolution exposure

Light Source

- UV LEDs will dramatically reduce exposure time through optimized light saturation
- High-efficiency UV LED system reduces power consumption to half of metal halide unit requirements
- Yellow LED inspection strips
- LEDs designed to last 50,000 hours or more

Control Interface

- Digital control with 4.3" touch screen
- Independent vacuum draw delay and exposure time thresholds
- Light automatically turns yellow when the cover is opened



UV LED LIGHT

Exposes screens quickly and in high resolution for crisp screen prints

MODEL	VACUUM PUMP	MAX SCREEN FRAME SIZE	MAX SIZE OF ARME SYSTEM	OUTER DIMENSIONS WxDxH (*HEIGHT WITH OPEN FRAME)	ELECTRICAL REQUIREMENTS
QUICK LIGHT 23x31	140 L/MIN	23"x 31" (58cm x 79cm)	21"x 28" (53cm x 71cm)	48.1"x36.3"x37.4" (*61.1") 122cm x 92cm x 95cm (155cm*)	1 Phase, 110V, 6A 1 Phase, 208-230V, 3A
QUICK LIGHT 26x36	140 L/MIN	26"x 36" (66cm x 91cm)	26"x 36" (66cm x 91cm)	54.5"x40.5"x37.4" (*64.3") 138.5cm x 103cm x 95cm (163cm*)	1 Phase, 110V, 9A 1 Phase, 208-230V, 5A
QUICK LIGHT 36x48	140 L/MIN X2	36"x 48" (91.5cm x 122cm)	30"x 45" (76cm x 114cm) Double 21"x 28" (2 x 53cm x 71cm)	62.9"x46.2"x37.4" (*68.1") 156cm x 117cm x 95cm (173cm*)	1 Phase, 110V, 15A 1 Phase, 208-230V, 8A

*Height in parentheses is with the lid with vacuum blanket open