



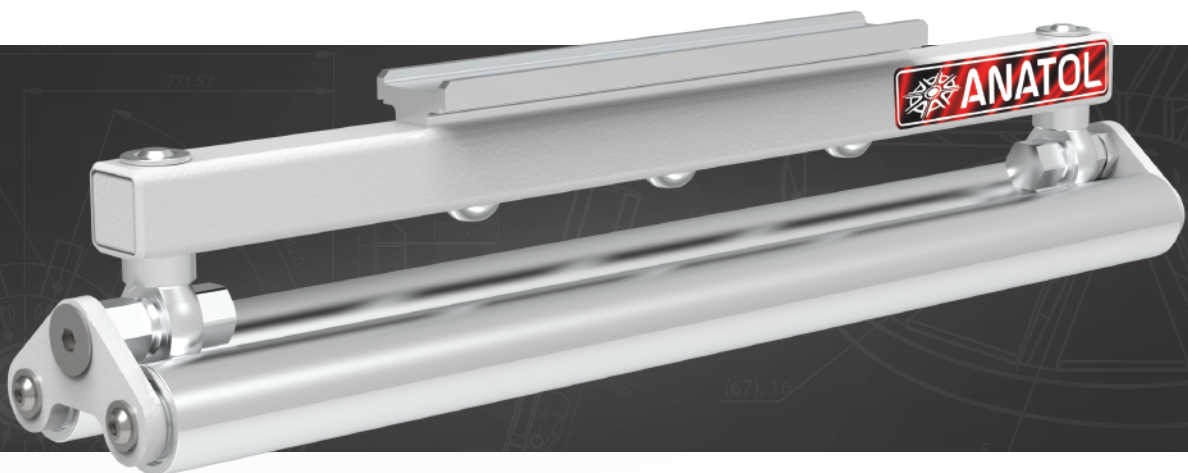
[www.anatol.com](http://www.anatol.com)

# ROLLER SQUEEGEE

Prevent fibrillation and increase print quality

Quickly and easily mounts in the print carriage of an Anatol VOLT, Vector or Titan automatic press

- Tool-less installation and adjustments
- Mat down garment fibers after flash curing to eliminate fibrillation and boost opacity, capture fine details and create smoother, more comfortable prints
- Used with Anatol S, M, L, XL standard screen





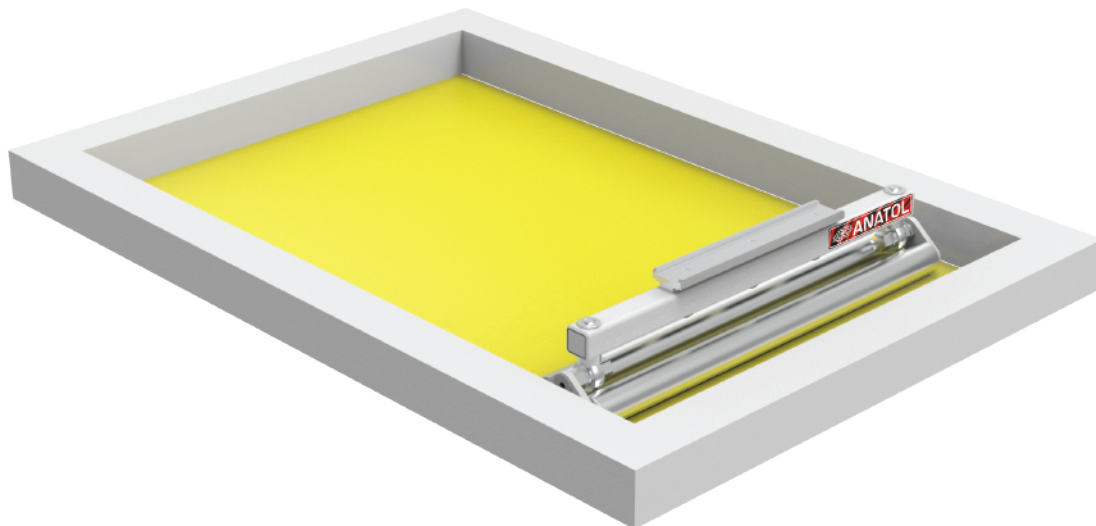
## STANDARD FEATURES

### Roller 16" S-M

OVERALL ROLLER DIMENSIONS		OVERALL FRAME DIMENSIONS	
Length	17.4" (44.3 cm)	Length	28" (71.1 cm) 33" (83.8 cm)
Width	3" (7.7cm)	Width	21" (53.4 cm) 23" (58.4 cm)
Height	3.66" (9.3cm)	Height	1.6" (4 cm)

### Roller 20" L-XL

OVERALL ROLLER DIMENSIONS		OVERALL FRAME DIMENSIONS	
Length	21.2" (54 cm)	Length	26" (66 cm)
Width	3" (7.7 cm)	Width	36" (91.4 cm) 43" (109.2 cm)
Height	3.66" (9.3 cm)	Height	2" (5 cm)



#### Two-Year Limited Warranty

Every effort has been made to ensure the accuracy of the promotional information included in this brochure. Specifications are subject to change. Anatol Equipment Manufacturing Co. and its subsidiaries, if any, expressly disclaim any liability for damages, consequential or incidental, resulting from the purchase, transportation, installation, or use of any products based on information contained within this brochure. Any rights or remedies are limited solely to those provided in writing by Anatol Equipment Manufacturing Co. at the time of sale.