

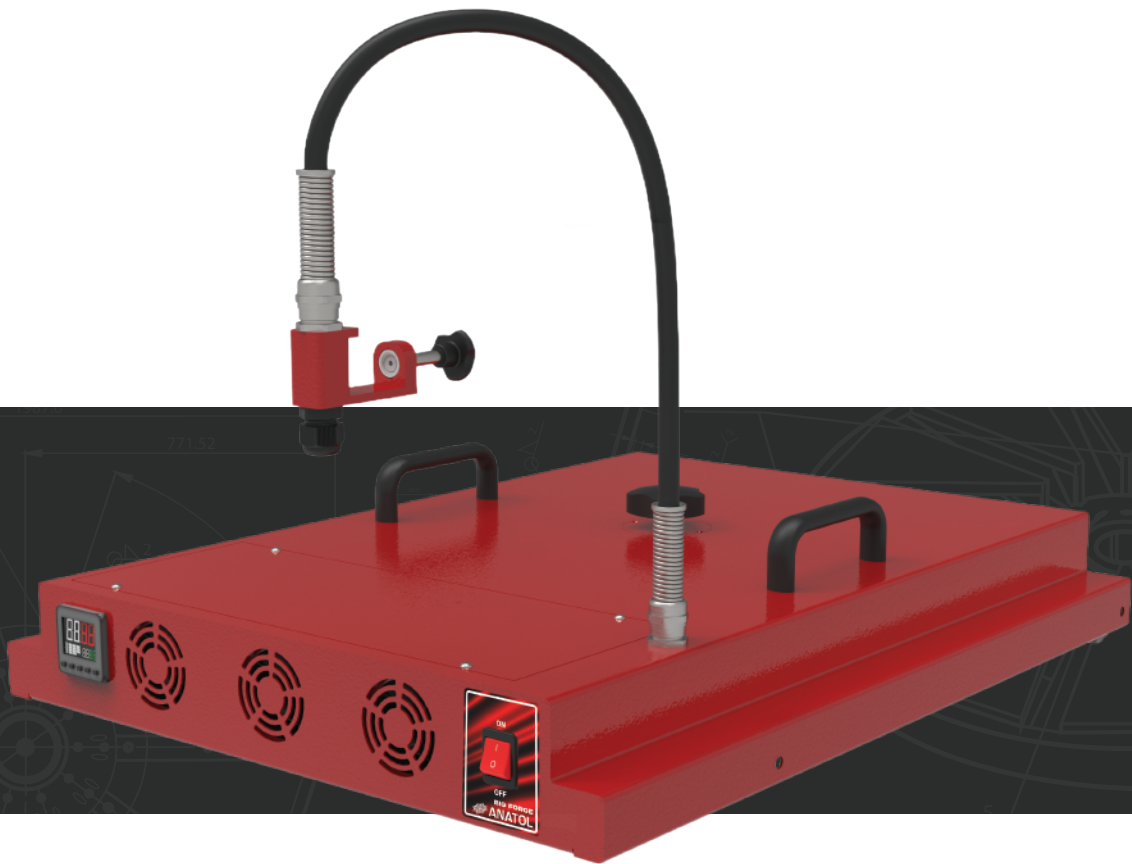


[www.anatol.com](http://www.anatol.com)

# BIG FORGE

## In-Line Heat Press

Heat Press for Automatic  
Screen Printing Machines





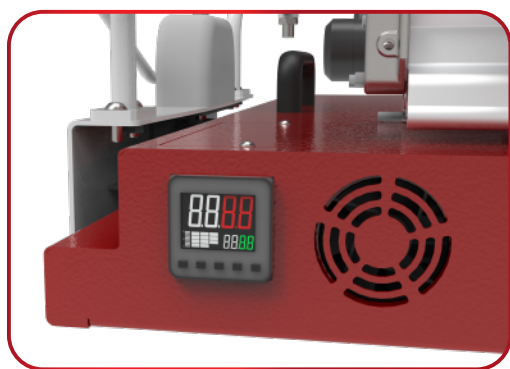
## STANDARD FEATURES

Improve your print quality and expand your screen printing possibilities with Anatol's easy-to-use BIG FORGE in-line heat press! The BIG FORGE mounts in the screen holders of your Anatol automatic screen printing press, providing heat and pressure to your substrate. Use it to mat down fibers and smooth your ink layers, reducing fibrillation and giving you a solid underbase for bright, vibrant prints on dark garments. Apply foil transfers and cure discharge ink right on your screen printing press, and more!

## Features

- Easy installation in the screen holders of your Anatol automatic screen printing press
- The Forge is activated manually and works independently of the press
- Compatible with Anatol Volt, Vector and Titan presses with S (15" x 16") and M (16" x 18") print areas
- Stationary heat press, providing uniform pressure and heating over the entire print area
- User-friendly digital temperature adjustment controls
- Set heating surface temperature up to 392°F/200°C
- The Forge automatically maintains set temperature
- Unique design ensures even distribution of heat and pressure

### Temperature control



### Mounting to press



MODEL	LENGTH (A)	WIDTH (B)	HEIGHT (C)	WEIGHT
Big Forge	28,3" (720 mm)	21,1" (537 mm)	6" (150 mm)	60 lbs 27 kg

Every effort has been made to ensure the accuracy of the promotional information included in this brochure. Specifications are subject to change. Anatol Equipment Manufacturing Co. and its subsidiaries, if any, expressly disclaim any liability for damages, consequential or incidental, resulting from the purchase, transportation, installation, or use of any products based on information contained within this brochure. Any rights or remedies are limited solely to those provided in writing by Anatol Equipment Manufacturing Co. at the time of sale.