



**ANATOL**

[www.anatol.com](http://www.anatol.com)

# VOLT

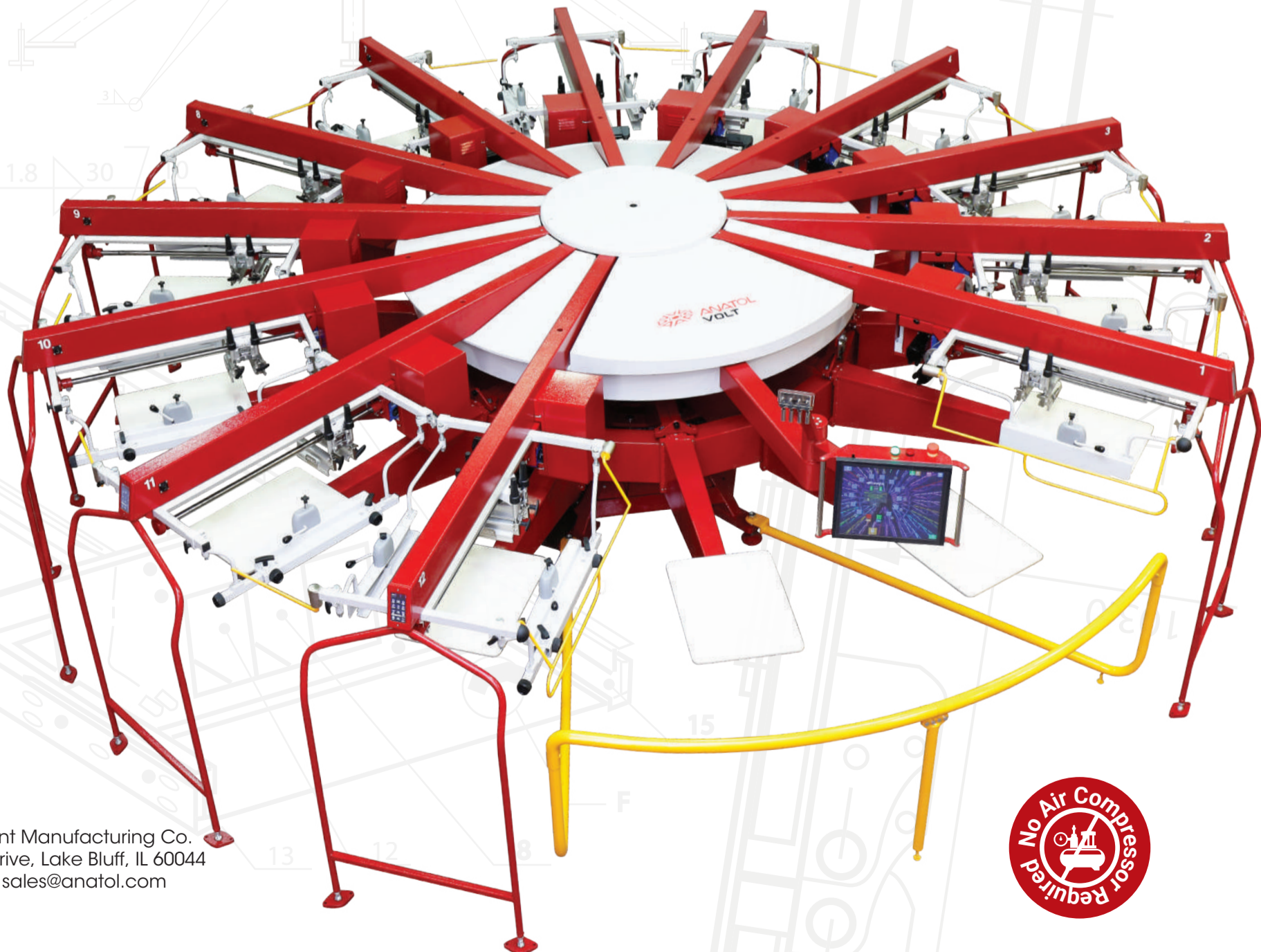
**Professional Grade  
All-Electric Automatic Press**

## Reliable and Long Lasting

- No pneumatic parts for years of reliable service and minimal maintenance
- No air compressor or chiller required

## Available in configurations of:

- Four different maximum print areas up to 20" x 28"
- 6 stations/4 colors up to 20 stations/18 colors



Anatol Equipment Manufacturing Co.  
919 Sherwood Drive, Lake Bluff, IL 60044  
1.847.367.9760 [sales@anatol.com](mailto:sales@anatol.com)



# STANDARD FEATURES

## CHANGE THE WAY YOU WORK

### Increased Efficiency. Higher Productivity.

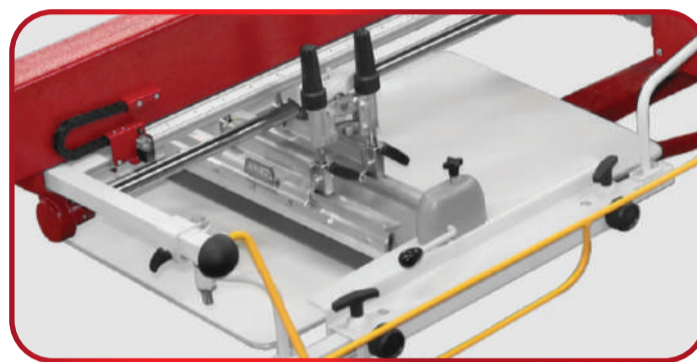
Anatol's VOLT all-electric screen printing machine introduces "smart" technology that lets screen printers surpass the possibilities of traditional screen printing equipment.

#### What's a servo motor?

Unlike other automatic presses, the VOLT uses servo motors for power. It's a rotary actuator that allows for precise control of angular position, velocity and acceleration. In simple terms, these "smart" motors make your job easier by giving you a more efficient way of running your business.

## Print Heads

- AC electric-driven print heads enhance smoothness, speed and power
- Front and rear stroke adjustment
- Single-handed tool-less squeegee/flood bar locking
- Easily adjustable side screen clamps accommodate a wide range of screen sizes
- Optional servo-driven print heads offer digital stroke length and squeegee pressure adjustment



**AC electric print heads standard, servo-driven print heads optional**

## Safety System

- Safety bars located between each print head and on each side of the load and unload stations ensure safety during press set-up and operation



**Industry-leading safety bars ensure safe set-up and operation**



**15" industrial-grade touchscreen monitor**

## Control Interface

- Aries 2 OS - User-friendly operating system
- 15" touchscreen with intuitive one-touch access to all job settings and machine functions for fast setup
- Rotating boom arm for easy access to each print head
- Easy access to operator's manual
- Automatic software updates available via Wi-Fi
- Receive automatic email notifications with production statistics
- Connect the machine directly to Anatol Service with Presentation Mode

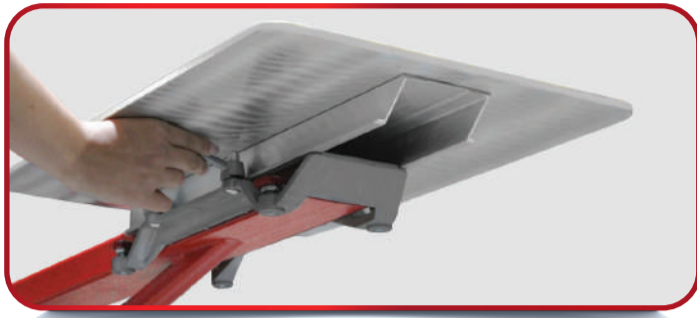


**Intuitive Aries 2 operating system**

## Functions

- Quickly save and recall all parameters of stored job: off-contact distance, indexer speed, print head speed, number of strokes, flash cure time and temperature, ink colors, print mode, and (with servo heads only) stroke length
- Easily copy the same print head settings to all heads

# STANDARD FEATURES



Slide-style pallet system for easy adjustment and changeover

## Pallet System

- Slide-style pallets allow for adjustments in print location
- Tool-free locking
- Precise four-point pallet leveling system
- 16"x22" solid aluminum, low profile rubber-coated pallets standard, with a wide variety of custom pallets available separately



Easy-to-read micro-registration targets with lenses for protection and magnification (NEW FEATURE)

## Registration

- True three-point micro-registration of screen (front-back, left-right, rotational movement)
- Compatible with Anatol's ARME pre-registration system, as well as a number of other different pre-registration systems available on the market

## Skip Shirt & Smash Button

- Save time and supplies by preventing the press from printing on empty pallets with our Skip Shirt function on the control panel
- Smash button allows for easy skipping of improperly loaded shirts to prevent misprints - more reliable than systems utilizing sensors



Smash button helps prevent misprints

## Indexing System

- Servo indexer allows for clockwise, counter-clockwise and half indexing - easily switch at the press of a button from job to job
- Smooth and quiet indexing at high speeds
- Ball bearing lead screw design with internal lubrication system
- Free-wheel capability available on most models allows for manual carousel rotation



High quality servo indexer for smooth, quiet rotation at even the highest production speeds, as well as free wheel capability for manual rotation

# STANDARD FEATURES



Digital off-contact adjustment right from the touchscreen control panel

## ↑↓ Central Off-Contact

- Digitally-controlled central off-contact with 38 settings up to 2/5", adjustable right from the machine's touchscreen



Heads Up Feature

## ↙ Heads Up Feature

- On machines with an odd number of print heads, this allows you to raise the last head on a hinge to create dedicated loading and unloading stations.

- It's like getting two machines in one. For example, a 10 station/ 9 color machine can become a 10 station/ 8 color machine when you need two operators to load and unload and aren't using the last head, allowing you to work faster.



Double Sleeve Pallet (Sold Separately)

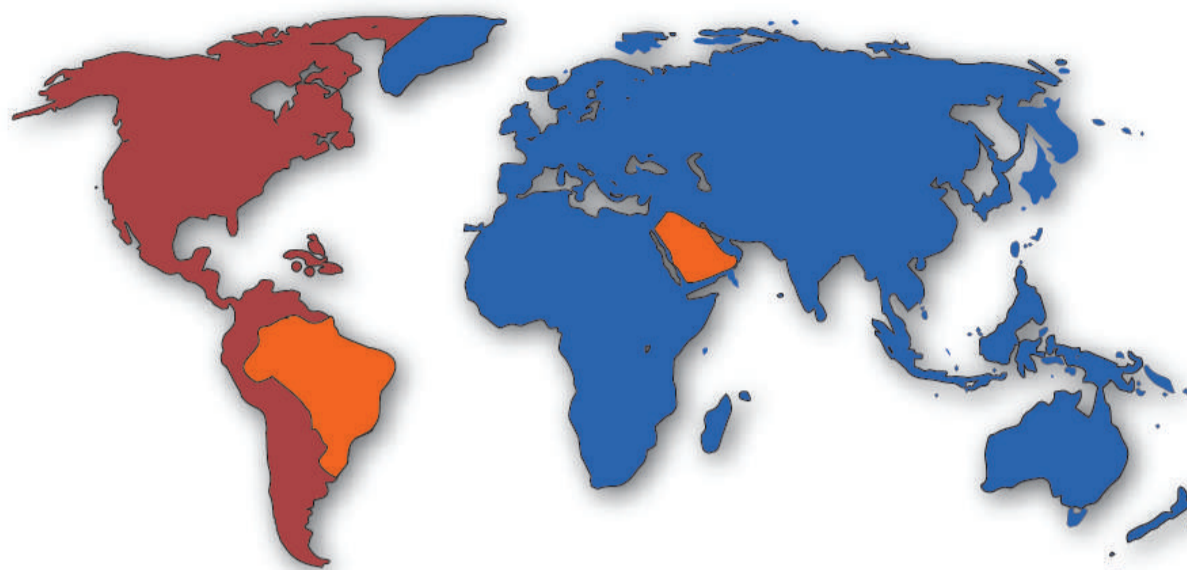
## ⋮ Options

- Quartz flash cure units
- Foot pedal to control indexing
- Quick-release pallet system
- Variety of specialty and custom pallets available
- Special sizing available for doorways as small as 28"
- Servo print heads allow you to control print stroke length and squeegee pressure digitally
- Individual print head controls-membrane panel or touchscreen

CONFIGURATION	MAX PRINT AREA	MAX SCREEN SIZE
S	15" x 16"	21" x 28"
M	16" x 18"	23" x 33"
L	20" x 20"	26" x 36"
XL	20" x 28"	26" x 43"

# SPECIFICATION OF POWER CONNECTIONS

Power supply voltages for each region are approximate, in order to verify exact values contact your local energy supplier.



**SPECIAL ORDER**



**PARAMETERS FOR 208 V**



**PARAMETERS FOR 230/400 V**



**CLARIFY WITH AT YOUR ENERGY PROVIDER**



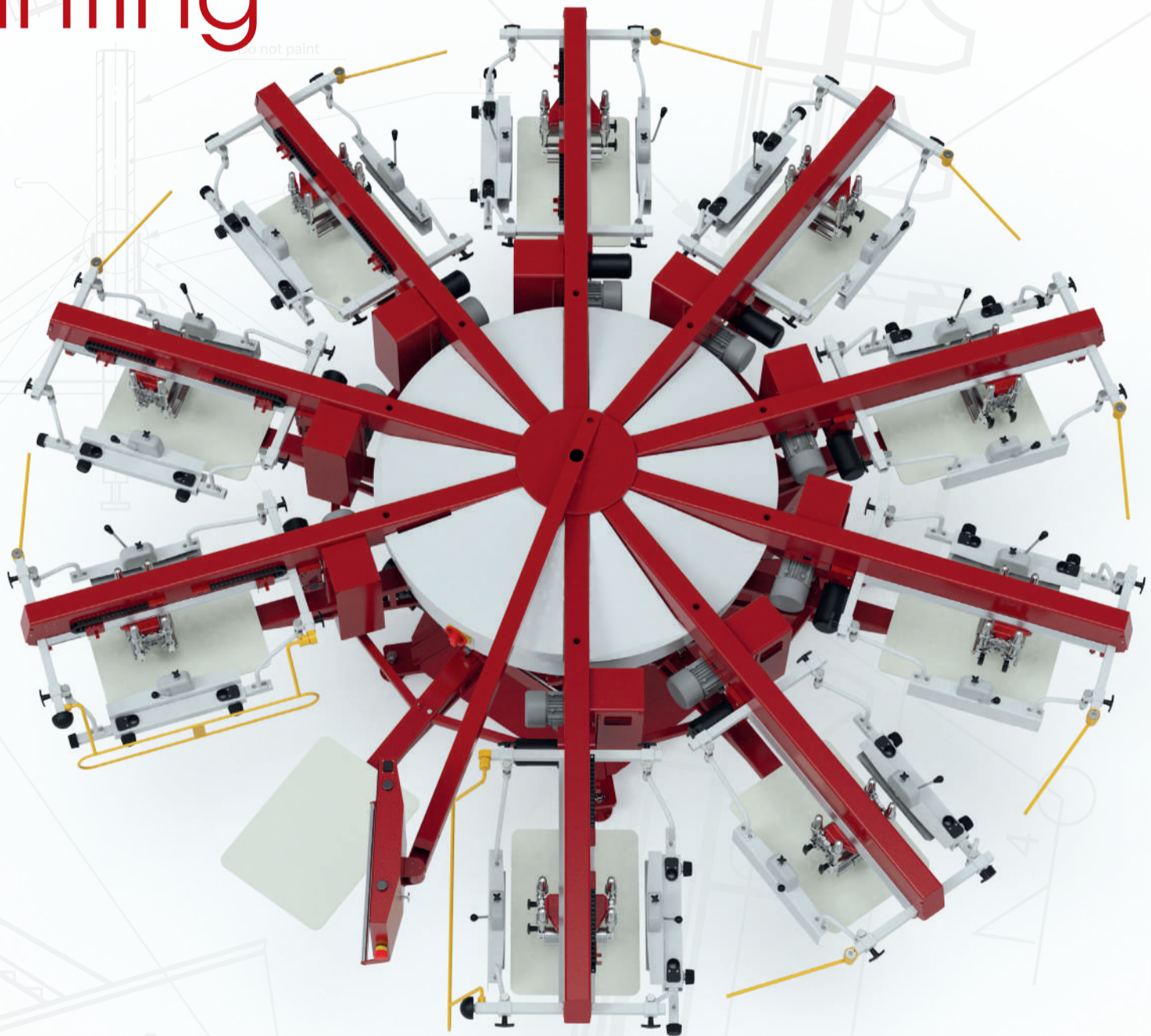
STATIONS COLORS	PRINT SIZE	AC HEADS			SERVO HEADS		
		1 PH 208/240V	3 PH 208/240V	3 PH 400V	1 PH 208/240V	3 PH 208/240V	3 PH 400V
06/04	S, M, L	18A	11A	7 A	19 A	13 A	8 A
06/05	S, M	19A	12A	7.2 A	20 A	15 A	9 A
08/06	S, M, L, XL	20A	13A	7.8 A	24 A	18 A	11 A
08/07	S, M, L, XL	21A	14A	8.4 A	28A	20A	12A
10/08	S, M, L, XL	31A	18A	11 A	32A	23 A	14 A
10/09	S, M, L, XL	32A	19A	11,5 A	36 A	26 A	16 A
12/10	S, M	36A	20A	12 A	40 A	29 A	17 A
12/10	L,XL	36A	20A	12 A	40 A	29 A	17 A
12/11	S, M	37A	21A	13 A	44 A	32 A	19 A
12/11	L, XL	37A	21A	13 A	44 A	32 A	19 A
14/12	M	40A	23A	24 A	48 A	35 A	21 A
14/12	L, XL	—	23A	14 A	—	35 A	21 A
16/14	M	—	26A	16 A	—	39 A	24 A
16/14	L, XL	—	32A	20 A	—	41 A	25 A
18/16	L, XL	—	36A	22 A	—	46 A	28 A
20/18	L, XL	—	38A	23 A	—	52 A	31 A



**ANATOL**

[www.anatol.com](http://www.anatol.com)

# Professional-Grade Electric Automatic Screen Printing Machine.



Visit our website  
and learn more  
about the products  
[www.anatol.com](http://www.anatol.com)



Phone: 847-367-9760  
Service: 847-582-1825



Fax: 847-582-1854



[sales@anatol.com](mailto:sales@anatol.com)



1429 S Shields Dr,  
Waukegan, IL 60085 USA