



ANATOL

www.anatol.com

SOLUTIONS

mini

High Efficiency Electric Dryer

Designed For Practicality

- Compact, space-saving design fits shops of all sizes
- Ceramic heating elements provide even heat distribution and reduce future maintenance costs
- Overall length from 5ft to 6.5ft

Available in configurations of:

- 24" wide belt up to 48" wide belt
- 2.5ft heat chamber up to 4ft heat chamber



STANDARD FEATURES



Design and Construction

- Industrial grade AC motor
- Heavy-duty construction
- High efficiency thermal insulation prevents heat from migrating into the workplace



Control Center

- Precise and easy-to-use digital temperature controls
- Adjustable belt speed to accommodate a variety of ink and substrate curing requirements



Heating Elements

- Ceramic heating elements heat up quickly and distribute heat evenly and efficiently
- 2" x 8" elements arranged in a grid of 6-15 total elements, depending on dryer configuration (see specification table)



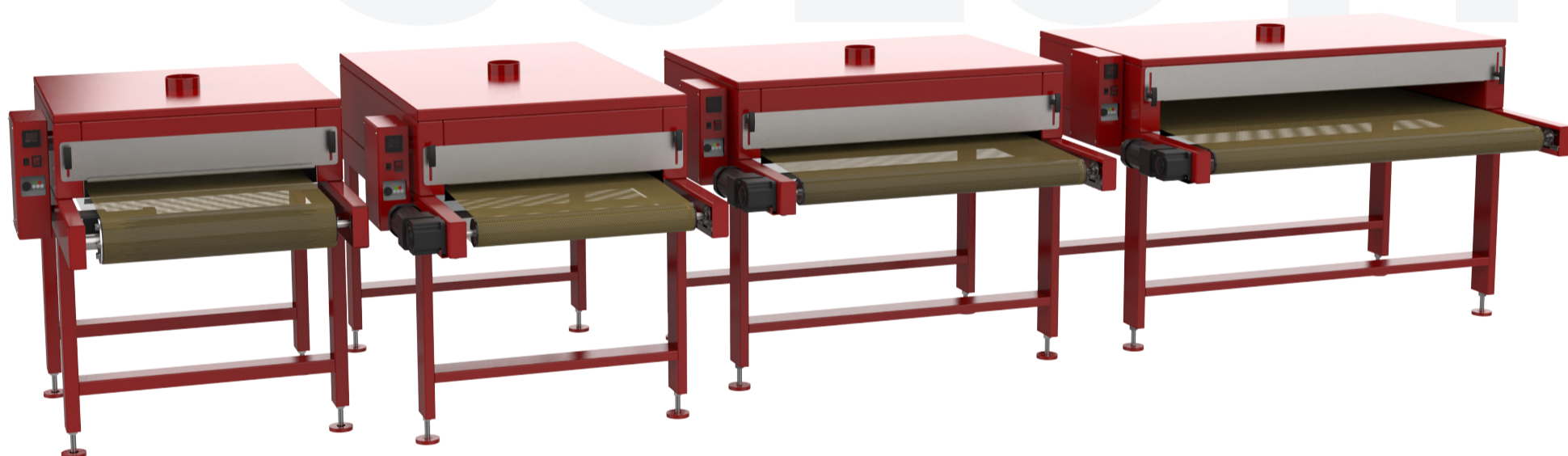
Conveyor System

- Industrial grade conveyor rollers
- Adjustable infeed/outfeed openings
- Teflon-coated fiberglass belt with speed control
- Belt tracking ensures the belt is precisely aligned at all times



Options

- Custom dryer size (length and width)
- Infeed/outfeed extension(s) per customer requirements
- Outfeed cooling fan to boost ink cooling when substrate exits the heat chamber
- Single-phase wiring to accommodate facilities with single phase electricity



MODEL	BELT WIDTH	HEAT CHAMBER	OVERALL LENGTH	STANDARD INFEEED/OUTFEED	WATTAGE	PIECES PER HR.	CERAMIC ELEMENTS
SEDM2425	24"	2'6"	5'	1'3"	3900 W	100-150	6
SEDM2404	24"	4.0'	6'6"	1'3"	5850 W	150-200	9
SEDM3625	36"	2'6"	5'	1'3"	5850 W	150-200	9
SEDM4825	48"	2'6"	5'	1'3"	9750 W	200-250	15

Two-Year Limited Warranty

Every effort has been made to ensure the accuracy of the promotional information included in this brochure. Specifications are subject to change. Anatol Equipment Manufacturing Co. and its subsidiaries, if any, expressly disclaim any liability for damages, consequential or incidental, resulting from the purchase, transportation, installation, or use of any products based upon information contained within this brochure. Any rights or remedies are limited solely to those provided in writing by Anatol Equipment Manufacturing Co. at the time of sale.